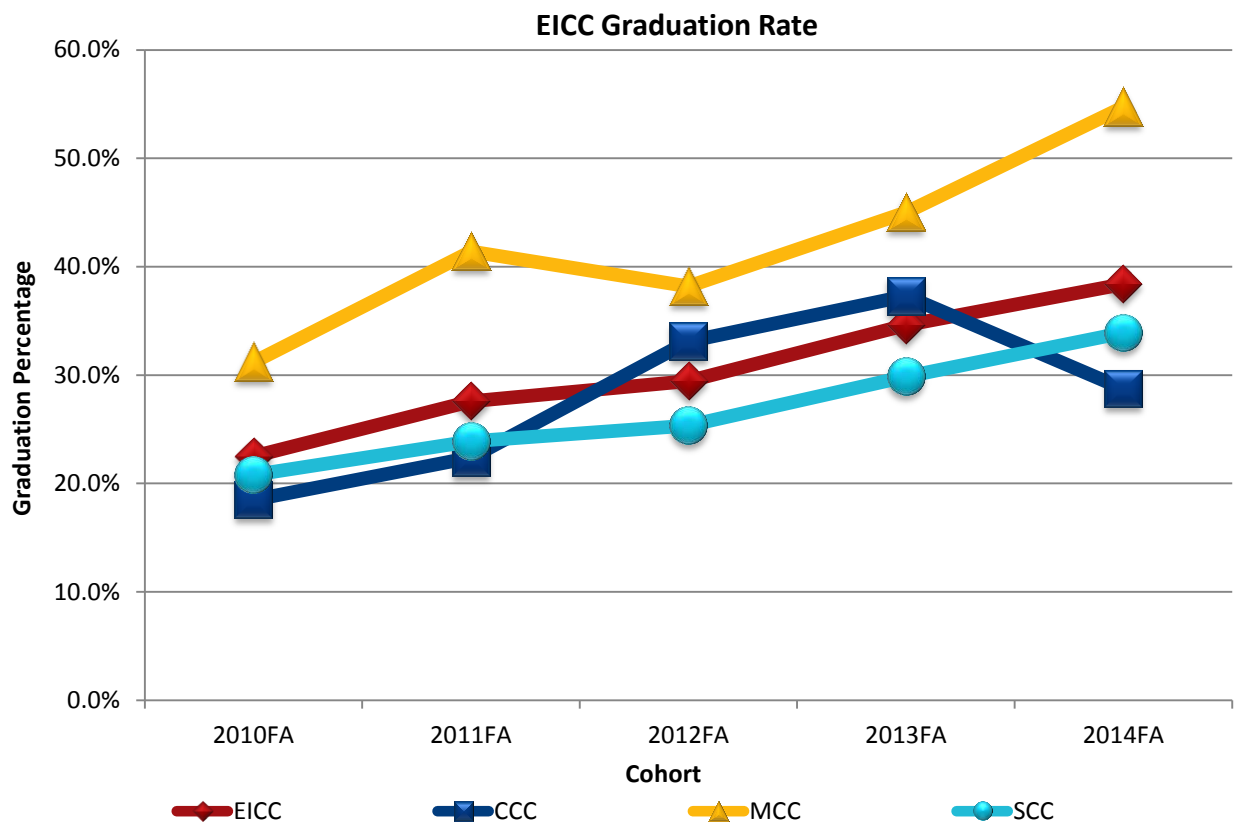


## IPEDS Graduation and Program Persistence Data Reported in Spring 2018 for the Fall 2014 Cohort

### Graduation Rates

EICC's overall reported graduation rate of this cohort was 38.4%, 3.8 points above the previous year's 34.6%. This is the only rate reported to the U.S. Department of Education; for internal purposes, the rates per EICC college are calculated. The table and chart below shows the graduation rate reported for EICC as well as the internal calculations for Clinton Community College, Muscatine Community College and Scott Community College over the past five years.

Cohort Year	2010FA	2011FA	2012FA	2013FA	2014FA
Eastern Iowa Community Colleges	22.5%	27.6%	29.5%	34.6%	38.4%
Clinton Community College	18.5%	22.4%	33.1%	37.3%	28.7%
Muscatine Community College	31.2%	41.4%	38.2%	45.0%	54.7%
Scott Community College	20.8%	23.9%	25.3%	29.8%	33.9%



Appendix B shows the history of the IPEDS graduation rate for EICC and each of its colleges for the past 16 years. EICC's highest graduation rate is the 38.4% reported this year with the 2014FA cohort (reported in Spring 2018). CCC's highest rate was 37.3% reported with the 2013FA cohort (reported

Spring 2017); MCC’s highest rate is the 54.7% reported this year with the 2014FA cohort (reported Spring 2018); SCC’s highest rate is the 33.9% reported this year with the 2014FA cohort (reported Spring 2018).

**Minority**

Appendix C has a full breakout of this year’s graduation rates by gender and race/ethnicity, by college, including the specific year the first award was earned. Appendix D shows college-level detail by race/ethnicity.

The greatest increase in minority graduation rates was with Hispanic Ethnicity, any race, increasing 10.0 points over the prior year with 35.0%. The greatest decrease was with Native American/Alaskan Native, which decreased 33.4 points from the prior year’s 66.7%. The graduation rate for all minorities combined increased 3.0 points to 30.2%.

Cohort Year	2010FA	2011FA	2012FA	2013FA	2014FA
Native American/Alaskan Native	28.6%	33.3%	20.0%	66.7%	33.3%
Asian	6.3%	21.4%	25.0%	66.7%	25.0%
Black	5.3%	6.6%	12.2%	21.1%	27.5%
Hawaiian/Pacific Islander	0.0%	0.0%	100.0%	50.0%	n/a
Hispanic, any race	15.6%	26.0%	20.9%	25.0%	35.0%
White	24.8%	30.6%	30.6%	37.6%	41.8%
Two or More Races	20.0%	19.2%	33.3%	26.1%	25.0%
Chose not to Reply/Unknown	23.5%	48.1%	31.3%	38.1%	12.5%
Nonresident Aliens	65.6%	39.1%	78.6%	28.6%	30.8%
<b>All Minorities (1-5 and 7)</b>	11.1%	15.7%	19.3%	27.2%	30.2%

**Gender**

Appendix C has a full breakout of this year’s graduation rates by gender and race/ethnicity, by college, including the specific year the first award was earned. Appendix E shows college-level detail by gender.

Male students continue to graduate at a higher rate than female students for the third consecutive year; the male students completed 0.5 points higher than female students. However, female students had a great increase in completion, up 5.5 points over the prior year.

Cohort Year	2010FA	2011FA	2012FA	2013FA	2014FA
Male	21.0%	26.0%	30.2%	36.5%	38.7%
Female	23.8%	29.2%	28.8%	32.7%	38.2%

**Straight from High School Students**

Of the 208 “non-traditional” students in the cohort, 68 (32.9%) completed a program within three years. This is 1.7 points above the previous year’s 24.8%.

Of the 434 cohort students who graduated from high school in 2013, 176 (40.6%) completed a program within three years. This is 8.0 points above the previous year's 32.6% and 8.5 points above students who graduated high school prior to 2014.

Of the 237 cohort students who graduated from high school in 2014 and earned hours while still in high school as a joint enrolled student, 110 (46.6%) completed a program within three years. This is 0.1 points below the previous year's 46.7%.

Students who graduated high school in 2014 who did not have any joint enrollment graduated at 32.9%, the same rate as students who completed high school prior to 2014.

Cohort Year	2010FA	2011FA	2012FA	2013FA	2014FA
Overall	22.5%	27.6%	29.5%	34.6%	38.4%
Graduated HS > Prior Spring	17.5%	18.3%	24.8%	26.5%	32.9%
Prior Spring HS Grads	26.6%	34.7%	32.6%	40.6%	41.4%
Prior Spring HS Grads with Joint Enrollment	33.8%	41.9%	38.0%	46.7%	46.6%

### **Developmental Education**

#### **Reading**

There were 99 students in the IPEDS cohort who placed into Developmental Reading. This represents 16.8% of the students in the cohort. The following table shows the graduation rate for students based on their placement into Developmental Reading. Students who were not tested may have not been tested because they already had coursework in high school that was beyond the level to require testing or because they were in a Career & Technical Education (CTE) program that did not require reading placement.

Reading Placement	Cohort	# Grads	Grad Rate
Not Tested	68	32	47.1%
College-Level	421	165	39.2%
Placed One Level Below	50	4	8.2%
Placed Two Levels Below	49	24	50.0%

#### **English**

There were 123 students in the IPEDS cohort who placed into Developmental English. This represents 20.9% of the students in the cohort. The following table shows the graduation rate for students based on their placement into Developmental English. Students who were not tested may have not been tested because they already had coursework in high school that was beyond the level to require testing or because they were in a Career & Technical Education (CTE) program that did not require English placement.

English Placement	Cohort	# Grads	Grad Rate
Not Tested	68	31	45.6%
College-Level	397	164	41.3%
Placed One Level Below	104	21	20.4%
Placed Two Levels Below	19	9	50.0%

Math

There were 379 students in the IPEDS cohort who placed into Developmental Reading. This represents 64.5% of the students in the cohort. The following table shows the graduation rate for students based on their placement into Developmental Math. Students who were not tested may have not been tested because they already had coursework in high school that was beyond the level to require testing or because they were in a Career & Technical Education (CTE) program that did not require math placement.

Math Placement	Cohort	# Grads	Grad Rate
Not Tested	54	29	53.7%
College-Level	155	83	53.5%
Placed One Level Below	119	36	30.5%
Placed Two Levels Below	74	20	27.0%
Placed Three Levels Below	186	57	30.8%

Online Enrollment Type

Three different delivery method groups were identified: students only taking traditional, face-to-face classes, known as **Classroom Only**; students taking traditional, face-to-face classes and online classes, known as **Online & Classroom**; and students only taking online courses, known as **Online Only**. Students were placed into one of these three categories dependent on their online enrollment type in their first term, 2014FA.

Online Enrollment Type	Cohort	# Grads	Grad Rate
Classroom Only	460	178	38.9%
Online & Classroom	90	32	35.6%
Online Only	38	15	39.5%

Graduation Data by Program

The data by program refers to the student’s program in the Fall 2014 term compared to the program they received an award in. The largest EICC program in the cohort was Liberal Arts, with 326 students (adjusted for exclusions). An award in Liberal Arts was received by 112 of these students (34.5%) within three years, and an award from EICC was received by 126 of these students (38.8%) within three years. This means 14 of the students who started in Liberal Arts (4.3%) graduated from a CTE program rather than from Liberal Arts.

The total number of students enrolled in a Career & Technical Education (CTE) program in the cohort was 262. An award was received by 99 of those students within three years, representing an overall CTE graduation rate of 37.9%. Seven students who started in a CTE program received a degree in Liberal Arts and 92 students received an award in a CTE program; however, 16 of the 99 students receiving an award in a CTE program received their award in a different CTE program than the program they were enrolled in at the beginning of the three years.

The table below shows the program graduation and the EICC graduation for each starting program. Nineteen programs had a program graduate rate higher than the district rate of 38.4% (bolded in the far right column, below). The program with the highest graduation rate was Supply Chain & Logistics, with a 100.0% program graduation rate.

Program	Number In Cohort	Program Grads <sup>1</sup>	Program Grad Rate	Cohort Grads <sup>2</sup>	EICC Grad Rate
Accounting Management	1	0	0.0%	1	100.0%
Administrative & Office Support	6	3	50.0%	4	66.7%
Agribusiness Management	9	8	88.9%	8	88.9%
ASL-English Interpreting	4	1	25.0%	1	25.0%
Auto Collision Repair Technology	0	N/A	N/A	N/A	N/A
Automotive Technology <sup>3</sup>	14	7	53.8%	7	53.8%
Business Management	20	5	25.0%	5	25.0%
Cancer Information Management	11	6	54.5%	6	54.5%
CNC Machining	2	1	50.0%	1	50.0%
Culinary Arts	19	1	5.3%	2	10.5%
Dental Assisting	5	4	80.0%	4	80.0%
Diesel Technology	7	5	71.4%	5	71.4%
Early Childhood Education	8	5	62.5%	5	62.5%
Electroneurodiagnostic Technology	4	3	75.0%	3	75.0%
Emergency Medical Services	3	2	66.7%	2	66.7%
Engineering Technology	8	3	37.5%	3	37.5%
Environmental, Health & Safety	0	N/A	N/A	N/A	N/A
Farm Management	6	5	83.3%	5	83.3%
Graphic Arts	6	1	16.7%	2	33.3%
Health Information Technology	6	3	50.0%	3	50.0%
Heating, Ventilation & Air Conditioning	7	5	71.4%	5	71.4%
Hospitality Management	3	1	33.3%	1	33.3%
Information Technology	19	5	26.3%	6	31.6%
Liberal Arts <sup>3</sup>	326	112	34.5%	126	38.8%
Mechanical Design Technology	0	N/A	N/A	N/A	N/A
Mechatronics	0	N/A	N/A	N/A	N/A
Nursing - LPN	4	0	0.0%	0	0.0%
Nursing - RN	56	4	7.1%	8	14.3%
Physical Therapy Assistant	1	0	0.0%	0	0.0%
Radiologic Technology	8	2	25.0%	2	25.0%
Supply Chain & Logistics	2	2	100.0%	2	100.0%
Surgical Technology	0	N/A	N/A	N/A	N/A
Technical Studies	0	N/A	N/A	N/A	N/A
Veterinary Technology	7	2	28.6%	2	28.6%
Welding Technology	13	6	46.2%	6	46.2%
<b>Reciprocal Programs</b>					
CSC-Dental Hygiene	1	0	0.0%	0	0.0%
NICC-Respiratory Care	0	N/A	N/A	N/A	N/A
<b>EICC Totals</b>	<b>588</b>	<b>202</b>	<b>34.5%</b>	<b>225</b>	<b>38.4%</b>
All CTE Programs	262	90	34.5%	99	37.9%

<sup>1</sup> Program Grads are the number of students who graduated in the program they began in when the cohort was formed.

<sup>2</sup> Cohort Grads are the number of students who graduated in the starting program or in a different program than what they were in when the cohort was formed.

<sup>3</sup> Cohort for Automotive Technology and Liberal Arts each contain one exclusion; percentages reflect the exclusions..

### Persistence Data by Program

In addition to graduation rate, persistence of non-graduates is also reported to IPEDS. In this cohort, 361 of the students did not achieve any academic award in the three years tracked. Of these students, 55 (15.2%) of non-graduates were enrolled in the 2017FA term, showing persistence toward an academic award; and 37 (10.2%) of them were still persisting toward their original academic award.

The following table breaks the persistence out by program, first showing students enrolled in 2017FA in the same program as their starting program and then showing students enrolled at EICC in the same or a different program.

The program with the highest persistence rate is ASL-English Interpreting, with 66.7% of students still pursuing an ASL-English Interpreting degree. Twenty-one programs have a 0.0% program persistence rate, and 19 programs have an EICC persistence rate of 0.0%.

Of the 199 students who began in Liberal Arts and did not receive an award, 33 were still enrolled with EICC in the 2017FA term, representing a 16.6% persistence rate. However, 11 of these students had changed to CTE programs.

Of the 162 students who began in a CTE program and did not receive an award, 22 were still enrolled with EICC in the 2017FA term, representing a 15.2% persistence rate. Eighteen of these students, however, were not enrolled in the same program they started in.

Program	Non-Grads	Still in Program 2017FA	Program Persistence Rate	Still at EICC 2017FA	EICC Persistence Rate
Accounting Management	0	N/A	N/A	N/A	N/A
Administrative & Office Support	2	0	0.0%	0	0.0%
Agribusiness Management	1	0	0.0%	0	0.0%
ASL-English Interpreting	3	2	66.7%	2	66.7%
Auto Collision Repair Technology	N/A	N/A	N/A	N/A	N/A
Automotive Technology <sup>3</sup>	6	0	0.0%	0	0.0%
Business Management	15	0	0.0%	0	0.0%
Cancer Information Management	5	1	20.0%	1	20.0%
CNC Machining	1	0	0.0%	0	0.0%
Culinary Arts	17	1	5.9%	1	5.9%
Dental Assisting	2	0	0.0%	0	0.0%
Diesel Technology	2	0	0.0%	0	0.0%
Early Childhood Education	3	0	0.0%	0	0.0%
Electroneurodiagnostic Technology	1	0	0.0%	0	0.0%
Emergency Medical Services	1	0	0.0%	0	0.0%
Engineering Technology	5	0	0.0%	0	0.0%
Environmental, Health & Safety	N/A	N/A	N/A	N/A	N/A
Farm Management	1	0	0.0%	0	0.0%
Graphic Arts	4	0	0.0%	0	0.0%
Health Information Technology	3	0	0.0%	1	33.3%
Heating, Ventilation & Air Conditioning	2	0	0.0%	0	0.0%
Hospitality Management	2	0	0.0%	0	0.0%
Information Technology	13	0	0.0%	0	0.0%

Program	Non-Grads	Still in Program 2017FA	Program Persistence Rate	Still at EICC 2017FA	EICC Persistence Rate
Liberal Arts <sup>3</sup>	199	22	11.1%	33	16.6%
Mechanical Design Technology	N/A	N/A	N/A	N/A	N/A
Mechatronics	N/A	N/A	N/A	N/A	N/A
Nursing - LPN	4	0	0.0%	1	25.0%
Nursing - RN	48	8	16.7%	11	22.9%
Physical Therapy Assistant	1	0	0.0%	0	0.0%
Radiologic Technology	6	1	16.7%	3	50.0%
Supply Chain & Logistics	N/A	N/A	N/A	N/A	N/A
Surgical Technology	N/A	N/A	N/A	N/A	N/A
Technical Studies	N/A	N/A	N/A	N/A	N/A
Veterinary Technology	5	1	20.0%	1	20.0%
Welding Technology	7	1	14.3%	1	14.3%
<b>Reciprocal Programs</b>					
CSC-Dental Hygiene	1	0	0.0%	0	0.0%
NICC-Respiratory Care	N/A	N/A	N/A	N/A	N/A
<b>EICC Totals</b>	<b>361</b>	<b>37</b>	<b>10.2%</b>	<b>55</b>	<b>15.2%</b>
All CTE Programs	162	15	9.3%	22	13.6%

### IPEDS Comparisons to other Community Colleges

IPEDS shares reported data from institutions; however, the latest available data was reported in Spring 2017 for the Fall 2013 cohort. EICC's reported graduation rate for that year was 34.6%. Nine of Iowa's community colleges had a graduation rate lower than EICC (shaded in the table on the next page).

The highest graduation rate amongst Iowa community colleges for the latest available year was at Northwest Iowa Community College, reporting 57.1%.

The statewide IPEDS graduation rate for the latest available year was 30.6%. EICC was 4.0 points above the average. The median graduation rate was 32.7%.

When compared with geographically-close Illinois community colleges, EICC performed 12.9 points higher than Black Hawk College, 0.9 points higher than Carl Sandburg College, and 2.9 points higher than Highland Community College, but was below Sauk Valley Community College by 8.4 points.

The table on the following page shows the latest available data for graduation rates for each Iowa community college as well as the geographically-closest Illinois community colleges.

Institution Name	Fall 2011 Cohort	Reported Grads 2015	FY15 IPEDS Graduation Rate	Fall 2012 Cohort	Reported Grads 2016	FY16 IPEDS Graduation Rate	Fall 2013 Cohort	Reported Grads 2017	FY17 IPEDS Graduation Rate
Eastern Iowa Community Colleges	920	254	27.6%	859	253	29.5%	757	262	34.6%
Des Moines Area Community College	2,763	562	20.3%	2,501	557	22.3%	2,250	598	26.6%
Ellsworth Community College	311	58	18.6%	352	87	24.7%	344	112	32.6%
Hawkeye Community College	1,328	373	28.1%	1,065	252	23.7%	912	189	20.7%
Indian Hills Community College	892	218	24.4%	914	318	34.8%	1,014	333	32.8%
Iowa Central Community College	1,197	444	37.1%	1,476	474	32.1%	1,139	335	29.4%
Iowa Lakes Community College	442	210	47.5%	425	184	43.3%	410	195	47.6%
Iowa Western Community College	1,409	259	18.4%	1,314	271	20.6%	1,160	291	25.1%
Kirkwood Community College	2,840	617	21.7%	2,475	591	23.9%	2,311	630	27.3%
Marshalltown Community College	435	79	18.2%	358	84	23.5%	359	127	35.4%
North Iowa Area Community College	704	288	40.9%	617	252	40.8%	572	247	43.2%
Northeast Iowa Community College-Calmar	641	215	33.5%	598	232	38.8%	589	231	39.2%
Northwest Iowa Community College	243	131	53.9%	253	142	56.1%	226	129	57.1%
Southeastern Community College	439	126	28.7%	410	130	31.7%	443	129	29.1%
Southwestern Community College	309	124	40.1%	270	96	35.6%	292	123	42.1%
Western Iowa Tech Community College	687	126	18.3%	581	154	26.5%	426	106	24.9%
<b>Total Iowa Community Colleges</b>	<b>15,560</b>	<b>4,084</b>	<b>26.2%</b>	<b>14,468</b>	<b>4,077</b>	<b>28.2%</b>	<b>13,204</b>	<b>4,037</b>	<b>30.6%</b>
<b>Median Iowa Community Colleges</b>			<b>27.8%</b>			<b>30.6%</b>			<b>32.7%</b>
Black Hawk College	440	91	20.7%	487	131	26.9%	437	95	21.7%
Carl Sandburg College	312	72	23.1%	354	94	26.6%	297	100	33.7%
Highland Community College	350	98	28.0%	360	120	33.3%	331	105	31.7%
Sauk Valley Community College	233	81	34.8%	371	142	38.3%	365	157	43.0%

Shaded values are graduation rates lower than Eastern Iowa Community Colleges' graduation rate.



## **Appendix A Methodology & Definitions**

EICC reports graduation data to the Integrated Postsecondary Education Data System (IPEDS) managed by the U.S. Department of Education in the Spring of each year, as required by the Student Right-to-Know legislation.

Data are collected on the number of students entering the institution as full time, first time, degree/certificate-seeking undergraduate students in a particular year (cohort), by race/ethnicity and gender; this year's cohort began at EICC in the Fall or Summer 2014 term. From that original cohort, the graduation rate is computed by determining the number of students completing a program within 150% of normal time to completion. As a community college, the number completing an award (degree, certificate or diploma) within three years is reported.

### **Defining the Cohort**

The cohort is calculated originally from the Fall 14<sup>th</sup> Day data.

The cohort included all students who began at EICC in the Fall or Summer 2014 term who attended full time in the Fall 2014 term with no transfer hours. It also included full time students who graduated from high school in 2014 who may have earned credits while jointly enrolled in high school, but EICC was the first postsecondary institution attended after high school graduation.

Degree-seeking was determined by a question on their original, or updated, application for admission. The student must not have indicated on their original application that they were not degree-seeking; the answer to this question must have been Yes or Not Answered.

The original Fall 2014 cohort for EICC included 588 students. The IPEDS adjusted cohort is 586 students (due to the death of two students).

The Fall 2014 cohort included 262 males (44.6% of cohort) and 326 females (55.4% of cohort). Minority students made up 23.8% (140 students) of the cohort; Unknown or Chose Not to Reply student ethnicity made up 1.4% (8 students) of the cohort; Nonresident aliens made up 2.2% of the cohort (13 students) and 72.6% (427 students) of the cohort was made up of white students.

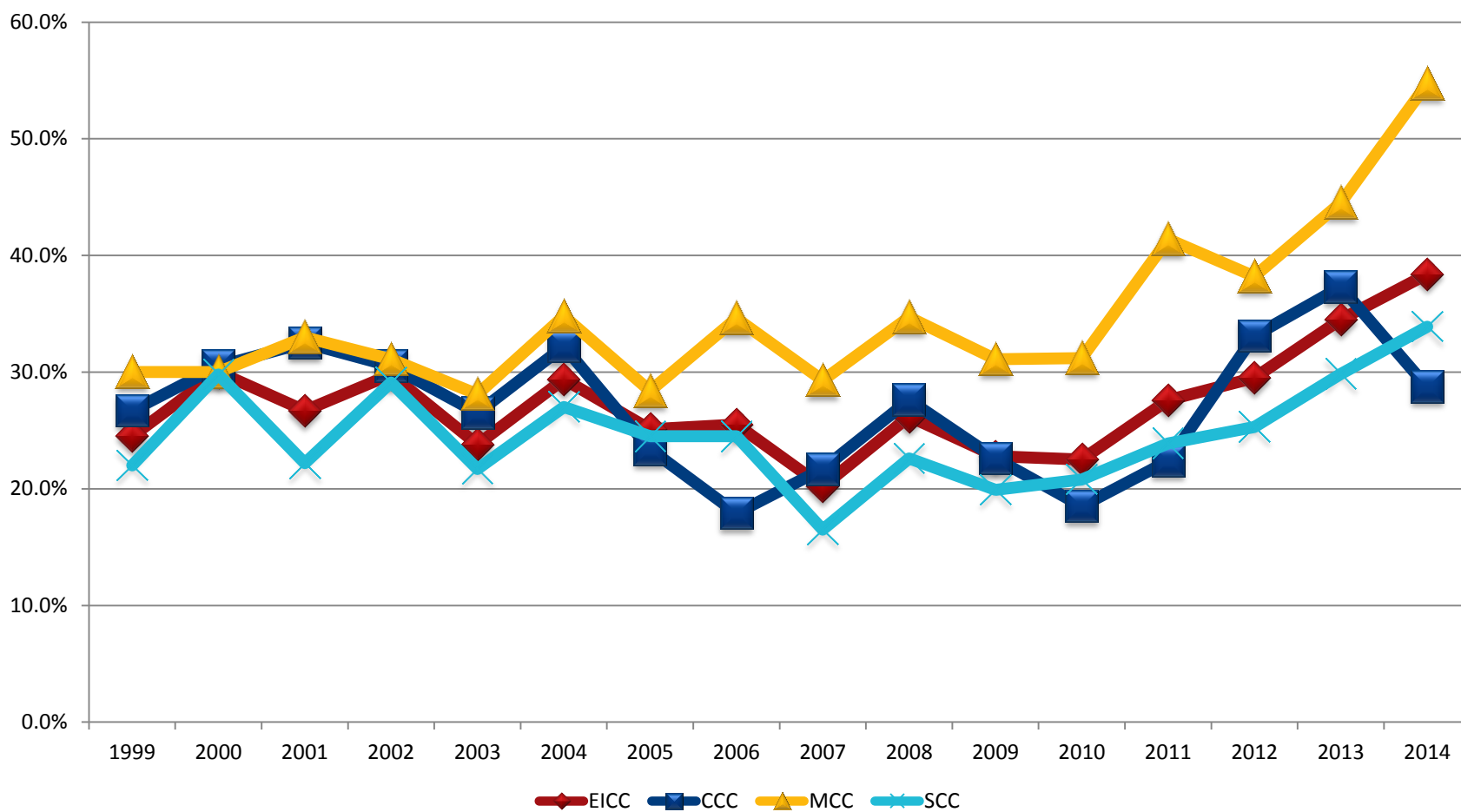
380 students (64.6%) in the cohort graduated from high school in 2014, with 237 of those students (40.3% of cohort; 62.4% of 2014 high school graduates) having attended EICC while still in high school. The remaining 208 students in the cohort (35.4%) did not attend college directly after high school and are tagged "non-traditional" in this report.

### **Calculating Awards**

Academic award data is captured for the academic year on September 10 of each year. Three years academic award files are unioned to create one master academic awards file. The three-year list is then uniqued by student, showing only their highest academic award achieved during the three years.

### Appendix B 15-Year History of IPEDS Graduation Rates by College

Cohort Year	2000	2001	2002	2003	2004	2005	2006	2007	2008	2009	2010	2011	2012	2013	2014
EICC	30.0%	26.7%	29.8%	23.8%	29.4%	25.1%	25.5%	20.2%	26.2%	22.8%	22.5%	27.6%	29.5%	34.5%	38.4%
CCC	30.5%	32.5%	30.5%	26.5%	32.2%	23.4%	17.9%	21.7%	27.6%	22.6%	18.5%	22.4%	33.1%	37.3%	28.7%
MCC	30.0%	33.0%	31.1%	28.1%	34.8%	28.4%	34.6%	29.3%	34.7%	31.1%	31.2%	41.4%	38.2%	44.5%	54.7%
SCC	29.8%	22.2%	29.1%	21.7%	27.0%	24.5%	24.5%	16.5%	22.6%	19.9%	20.8%	23.9%	25.3%	29.8%	33.9%



### Appendix C Minority Detail Broken Down by College

		2014 Cohort				Award 2013-2014 50%				Award 2014-2015 100%				Award 2015-2016 150%				IPEDS Total 150% Grad Rate				EICC Grad				
		CCC	MCC	SCC	EICC	CCC	MCC	SCC	EICC	CCC	MCC	SCC	EICC	CCC	MCC	SCC	EICC	CCC	MCC	SCC	EICC	EICC Grad				
																						Rate				
<b>Males</b>	Native American/ Alaskan Native	0	0	0	0	0	0	0	0	0	0	0	0	0	0	0	0	0	0	0	0	0	0	0	0	NA
	Asian	0	0	7	7	0	0	0	0	0	0	1	1	0	0	1	1	0	0	2	2	2	2	28.6%		
	Black	2	2	15	19	0	1	0	1	0	0	3	3	0	0	1	1	0	1	4	5	5	5	26.3%		
	Hawaiian/Pac Islander	0	0	0	0	0	0	0	0	0	0	0	0	0	0	0	0	0	0	0	0	0	0	NA		
	Hispanic, Any Race	2	9	20	31	0	0	3	3	0	1	4	5	0	0	1	1	0	1	8	9	9	9	29.0%		
	White	30	47	110	187	0	1	8	9	9	19	25	53	1	5	11	17	10	25	44	79	79	79	42.2%		
	2 Or More Races	2	0	9	11	2	0	1	3	0	0	0	0	0	0	0	0	2	0	1	3	3	3	30.0%		
	Chose not to Reply/Unk	2	0	1	3	0	0	0	0	0	0	0	0	0	0	1	1	0	0	1	1	1	1	33.3%		
	Nonresident Aliens	0	2	2	4	0	2	0	2	0	0	0	0	0	0	0	0	0	2	0	2	2	2	50.0%		
	<b>Total Males</b>	<b>38</b>	<b>60</b>	<b>164</b>	<b>262</b>	<b>2</b>	<b>4</b>	<b>12</b>	<b>18</b>	<b>9</b>	<b>20</b>	<b>33</b>	<b>62</b>	<b>1</b>	<b>5</b>	<b>15</b>	<b>21</b>	<b>12</b>	<b>29</b>	<b>60</b>	<b>101</b>	<b>101</b>	<b>101</b>	<b>38.5%</b>		
<b>Females</b>	Native American/ Alaskan Native	1	1	1	3	0	0	0	0	0	1	0	1	0	0	0	0	0	1	0	1	1	1	33.3%		
	Asian	0	0	5	5	0	0	0	0	0	0	0	0	0	0	1	1	0	0	1	1	1	1	20.0%		
	Black	1	3	17	21	0	2	0	2	0	1	0	1	1	0	2	3	1	3	2	6	6	6	28.6%		
	Hawaiian/Pac Islander	0	0	0	0	0	0	0	0	0	0	0	0	0	0	0	0	0	0	0	0	0	0	NA		
	Hispanic, Any Race	2	12	15	29	0	1	1	2	0	3	2	5	0	3	2	5	0	7	5	12	12	12	41.4%		
	White	45	69	126	240	1	4	8	13	5	25	27	57	5	10	14	29	11	39	49	99	99	99	41.4%		
	2 Or More Races	1	1	12	14	0	0	1	1	0	0	0	0	1	0	1	2	1	0	2	3	3	3	21.4%		
	Chose not to Reply/Unk	0	0	5	5	0	0	0	0	0	0	0	0	0	0	0	0	0	0	0	0	0	0	0.0%		
	Nonresident Aliens	0	2	7	9	0	2	0	2	0	0	0	0	0	0	0	0	0	2	0	2	2	2	22.2%		
	<b>Total Females</b>	<b>50</b>	<b>88</b>	<b>188</b>	<b>326</b>	<b>1</b>	<b>9</b>	<b>10</b>	<b>20</b>	<b>5</b>	<b>30</b>	<b>29</b>	<b>64</b>	<b>7</b>	<b>13</b>	<b>20</b>	<b>40</b>	<b>13</b>	<b>52</b>	<b>59</b>	<b>124</b>	<b>124</b>	<b>124</b>	<b>38.0%</b>		
<b>Total Cohort</b>		<b>88</b>	<b>148</b>	<b>352</b>	<b>588</b>	<b>3</b>	<b>13</b>	<b>22</b>	<b>38</b>	<b>14</b>	<b>50</b>	<b>62</b>	<b>126</b>	<b>8</b>	<b>18</b>	<b>35</b>	<b>61</b>	<b>25</b>	<b>81</b>	<b>119</b>	<b>225</b>	<b>225</b>	<b>225</b>	<b>28.7%</b>		
<b>Graduation Rate by Year</b>						<b>3.4%</b>	<b>8.8%</b>	<b>6.3%</b>	<b>6.5%</b>	<b>15.9%</b>	<b>33.8%</b>	<b>17.6%</b>	<b>21.4%</b>	<b>9.1%</b>	<b>12.2%</b>	<b>9.9%</b>	<b>10.4%</b>	<b>28.7%</b>	<b>54.7%</b>	<b>33.9%</b>	<b>38.4%</b>					

CCC had one exclusions, white female; SCC had one exclusion, two or more races male.  
Official data reported in Spring 2018.

**Appendix D  
Minority Breakdown by College**

Entering Fall 2014	CCC			MCC			SCC		
	Cohort	# Grads	Grad Rate	Cohort	# Grads	Grad Rate	Cohort	# Grads	Grad Rate
Native American/Alaskan Native	1	0	0.0%	1	1	100.0%	1	0	0.0%
Asian	0	0	NA	0	0	NA	12	3	25.0%
Black	3	1	33.3%	5	4	80.0%	32	6	18.8%
Hawaiian/Pac Islander	0	0	NA	0	0	NA	0	0	NA
Hispanic, Any Race	4	0	0.0%	21	8	38.1%	35	13	37.1%
White	75	21	28.4%	116	64	55.2%	236	93	39.4%
2 Or More Races	3	3	100.0%	1	0	0.0%	21	3	15.0%
Choose not to Reply	2	0	0.0%	0	0	NA	6	1	16.7%
Nonresident Aliens	0	0	NA	4	4	100.0%	9	0	0.0%
<b>Total</b>	<b>88</b>	<b>25</b>	<b>28.7%</b>	<b>148</b>	<b>81</b>	<b>54.7%</b>	<b>352</b>	<b>119</b>	<b>33.9%</b>

Entering Fall 2013	CCC			MCC			SCC		
	Cohort	# Grads	Grad Rate	Cohort	# Grads	Grad Rate	Cohort	# Grads	Grad Rate
Native American/Alaskan Native	0	0	NA	2	1	50.0%	1	1	100.0%
Asian	2	1	50.0%	3	3	100.0%	10	6	60.0%
Black	16	1	6.3%	8	2	25.0%	66	16	24.2%
Hawaiian/Pac Islander	0	0	NA	0	0	NA	2	1	50.0%
Hispanic, Any Race	4	1	25.0%	33	12	36.4%	44	7	15.9%
White	93	40	43.0%	124	60	48.4%	300	94	31.3%
2 Or More Races	0	0	NA	5	1	20.0%	18	5	27.8%
Choose not to Reply	3	1	33.3%	2	0	0.0%	16	7	43.8%
Nonresident Aliens	0	0	NA	5	2	40.0%	2	0	0.0%
<b>Total</b>	<b>118</b>	<b>44</b>	<b>37.3%</b>	<b>182</b>	<b>81</b>	<b>44.5%</b>	<b>459</b>	<b>137</b>	<b>29.8%</b>

Entering Fall 2012	CCC			MCC			SCC		
	Cohort	# Grads	Grad Rate	Cohort	# Grads	Grad Rate	Cohort	# Grads	Grad Rate
Native American/Alaskan Native	1	0	0.0%	2	0	0.0%	7	2	28.6%
Asian	1	0	0.0%	1	0	0.0%	10	3	30.0%
Black	16	2	12.5%	3	2	66.7%	63	6	9.5%
Hawaiian/Pac Islander	0	0	NA	0	0	NA	2	2	100.0%
Hispanic, Any Race	5	0	0.0%	29	7	24.1%	52	11	21.2%
White	117	44	37.6%	134	54	40.3%	341	83	24.3%
2 Or More Races	0	0	NA	0	0	NA	15	5	33.3%
Choose not to Reply	8	3	37.5%	13	5	38.5%	11	2	18.2%
Nonresident Aliens	0	0	NA	4	3	75.0%	24	19	79.2%
<b>Total</b>	<b>148</b>	<b>49</b>	<b>33.1%</b>	<b>186</b>	<b>71</b>	<b>38.2%</b>	<b>525</b>	<b>133</b>	<b>25.3%</b>

Entering Fall 2011	Cohort	# Grads	Grad Rate	Cohort	# Grads	Grad Rate	Cohort	# Grads	Grad Rate
Native American/Alaskan Native	1	1	100.0%	1	0	0.0%	1	0	0.0%
Asian	1	0	0.0%	1	1	100.0%	12	2	16.7%
Black	24	0	0.0%	2	0	0.0%	80	7	8.8%
Hawaiian/Pac Islander	0	0	NA	0	0	NA	4	0	0.0%
Hispanic, Any Race	2	0	0.0%	27	9	33.3%	48	11	22.9%
White	127	33	26.0%	150	63	42.0%	363	100	27.5%
2 Or More Races	0	0	NA	1	1	100.0%	25	4	16.0%
Choose not to Reply	6	2	33.3%	8	4	50.0%	13	7	53.8%
Nonresident Aliens	0	0	NA	20	9	45.0%	3	0	0.0%
<b>Total</b>	<b>161</b>	<b>36</b>	<b>22.4%</b>	<b>210</b>	<b>87</b>	<b>41.4%</b>	<b>549</b>	<b>131</b>	<b>23.9%</b>

Entering Fall 2010	CCC			MCC			SCC		
	Cohort	# Grads	Grad Rate	Cohort	# Grads	Grad Rate	Cohort	# Grads	Grad Rate
Native American/Alaskan Native	3	1	33.3%	0	0	NA	4	1	25.0%
Asian	1	0	0.0%	2	0	0.0%	13	1	7.7%
Black	26	2	7.7%	9	0	0.0%	96	5	5.2%
Hawaiian/Pac Islander	0	0	NA	0	0	NA	2	0	0.0%
Hispanic, Any Race	12	1	8.3%	37	9	24.3%	73	9	12.3%
White	199	41	20.6%	200	68	34.0%	484	110	22.7%
2 Or More Races	1	0	0.0%	0	0	NA	19	4	21.1%
Choose not to Reply	6	1	16.7%	9	4	44.4%	19	3	15.8%
Nonresident Aliens	1	0	0.0%	9	2	22.2%	22	19	86.4%
<b>Total</b>	<b>249</b>	<b>46</b>	<b>18.5%</b>	<b>266</b>	<b>83</b>	<b>31.2%</b>	<b>732</b>	<b>152</b>	<b>20.8%</b>

Entering Fall 2009	Cohort	# Grads	Grad Rate	Cohort	# Grads	Grad Rate	Cohort	# Grads	Grad Rate
Native American/Alaskan Native	3	1	33.3%	3	2	66.7%	6	1	16.7%
Asian	1	1	100.0%	1	0	0.0%	16	6	37.5%
Black	22	1	4.5%	5	0	0.0%	88	9	10.2%
Hawaiian/Pac Islander	1	0	0.0%	0	0	NA	1	0	0.0%
Hispanic, Any Race	4	1	25.0%	38	9	23.7%	41	8	19.5%
White	178	45	25.3%	191	60	31.4%	516	112	21.7%
2 Or More Races	2	0	0.0%	3	0	0.0%	4	0	0.0%
Choose not to Reply	10	1	10.0%	10	4	40.0%	95	16	16.8%
Nonresident Aliens	0	0	NA	16	8	50.0%	2	1	50.0%
<b>Total</b>	<b>221</b>	<b>50</b>	<b>22.6%</b>	<b>267</b>	<b>83</b>	<b>31.1%</b>	<b>769</b>	<b>153</b>	<b>19.9%</b>

**Appendix E  
Gender Breakdown by College**

Entering Fall 2014	CCC			MCC			SCC		
	Cohort	# Grads	Grad Rate	Cohort	# Grads	Grad Rate	Cohort	# Grads	Grad Rate
Male	38	12	31.6%	60	29	48.3%	164	60	36.8%
Female	50	13	26.5%	88	52	59.1%	188	59	31.4%
Total	88	25	28.7%	148	81	54.7%	352	119	33.9%

Entering Fall 2013	CCC			MCC			SCC		
	Cohort	# Grads	Grad Rate	Cohort	# Grads	Grad Rate	Cohort	# Grads	Grad Rate
Male	54	23	42.6%	90	40	44.4%	242	77	31.8%
Female	64	21	32.8%	92	41	44.6%	217	60	27.6%
Total	118	44	37.3%	182	81	44.5%	459	137	29.8%

Entering Fall 2012	Cohort	# Grads	Grad Rate	Cohort	# Grads	Grad Rate	Cohort	# Grads	Grad Rate
	Male	64	26	40.6%	97	40	41.2%	230	52
Female	84	23	27.4%	89	31	34.8%	295	81	27.5%
Total	148	49	33.1%	186	71	38.2%	525	133	25.3%

Entering Fall 2011	Cohort	# Grads	Grad Rate	Cohort	# Grads	Grad Rate	Cohort	# Grads	Grad Rate
	Male	71	13	18.3%	105	40	38.1%	281	66
Female	90	23	25.6%	105	47	44.8%	268	65	24.3%
Total	161	36	22.4%	210	87	41.4%	549	131	23.9%

Entering Fall 2010	Cohort	# Grads	Grad Rate	Cohort	# Grads	Grad Rate	Cohort	# Grads	Grad Rate
	Male	109	19	17.4%	110	32	29.1%	339	66
Female	140	27	19.3%	156	51	32.7%	393	86	21.9%
Total	249	46	18.5%	266	83	31.2%	732	152	20.8%

Entering Fall 2009	Cohort	# Grads	Grad Rate	Cohort	# Grads	Grad Rate	Cohort	# Grads	Grad Rate
	Male	99	19	19.2%	118	36	30.5%	381	74
Female	122	31	25.4%	149	47	31.5%	388	79	20.4%
Total	221	50	22.6%	267	83	31.1%	769	153	19.9%