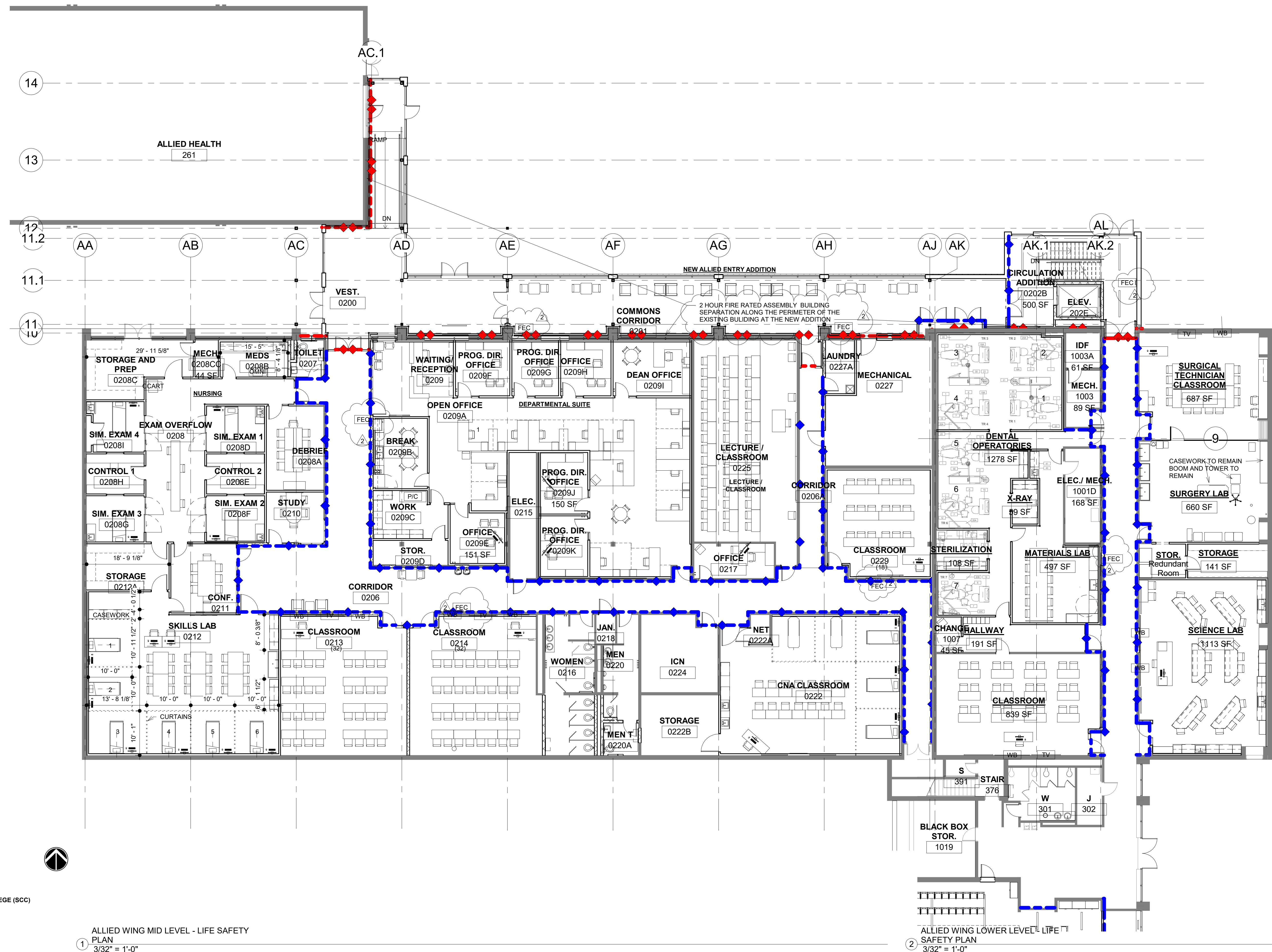


SCOTT COMMUNITY COLLEGE -BELMONT CAMPUS
ALLIED HEALTH ADDITION AND REMODEL

500 BELMONT ROAD
BETTENDORF, IA 52722



- LIFE SAFETY LEGEND**
- - - SMOKE PARTITION
 - - - ONE HOUR FIRE
 - - - ONE HOUR FIRE + SMOKE BARRIER
 - - - TWO HOUR FIRE
 - - - TWO HOUR FIRE + SMOKE BARRIER
 - SUITE AREA
 - ▲ EXIT
 - ▲ SUITE EXIT
 - - - SUITE BOUNDARY

BUILDING NOTES AND CODE SUMMARY

EXISTING BUILDING AREA
UPPER LEVEL 13,216 SF
MID-LEVEL 16,170 SF
LOWER LEVEL 13,216 SF
TOTALS 42,606 SF

BUILDING REMODEL AND ADDITION TO EASTERN IOWA COMMUNITY COLLEGE (EIC) SCOTT COMMUNITY COLLEGE (SCC) BELMONT CAMPUS ALLIED HEALTH (CTE) PROJECT
TOTAL REMODEL AREA 22,374 SF
TOTAL ADDITION AREA 3,335 SF

OCCUPANCY CLASSIFICATION (304.1)
GROUP B - BUSINESS

TYPE OF CONSTRUCTION (602.3)
TYPE II - B

ALLOWABLE AREA (506.2)
GROUP B - HIGHER EDUCATION 23,000 SF/FLOOR

ALLOWABLE NUMBER OF STORIES (TABLE 504.4)
GROUP B - HIGHER EDUCATION - 3 STORIES

AUTOMATIC SPRINKLER SYSTEM
NO. 1 HOUR FIRE RATED CORRIDORS AND 2 HOUR FIRE RATED BUILDING SEPARATION

CODES:
2015 INTERNATIONAL BUILDING CODE
2015 INTERNATIONAL FIRE CODE
2012 INTERNATIONAL ENERGY CONSERVATION CODE
2010 AMERICANS WITH DISABILITIES ACT
ASHRAE 90.1 MINIMUM VALUES FOR ENVELOPE

OCCUPANT LOADS (TABLE 1004.1.2)
NEW ADDITION
Student Services = Accessory 107 SF/300 gross = 1 occupant + Business 1923 SF/100 gross = 20 occupants = **21 occupants**
Bookstore = Mercantile 1338 SF/60 gross = 23 occupants
Commons (seating area only) = 350 SF/15 net = 24 occupants
Study Rooms = Assembly (unconnected) 622 SF/15 net = 42 occupants
New Addition Totals = 110 Occupants

EXISTING BUILDING
42,606 SF / 100 SF / PERSON = 427 OCCUPANTS
NEW TOTAL = 537 OCCUPANTS

1 ALLIED WING MID LEVEL - LIFE SAFETY PLAN
3/32" = 1'-0"

2 ALLIED WING LOWER LEVEL - LIFE SAFETY PLAN
3/32" = 1'-0"

NO.	DESCRIPTION	DATE
2	ADDENDUM #1	07.27.22
1	BID SET	07.13.22

LIFE SAFETY FLOOR PLANS AND CODE SUMMARY

PROJECT: 21002283.01